

Trombone 1

If Love Be Blind

Thomas Bateson (1604)

transcription for
trombone quartet
by I. Linssen

♩=100

2

mf

8

14

19

24

30

36

42

48

If Love Be Blind

Trombone 2

Thomas Bateson (1604)

transcription for
trombone quartet
by I. Linssen

$\text{♩} = 100$

mf

7

13

18

24

29

34

40

46

49

Trombone 3

If Love Be Blind

Thomas Bateson (1604)

transcription for
trombone quartet
by I. Linssen

♩=100



Trombone 4

If Love Be Blind

Thomas Bateson (1604)

transcription for
trombone quartet
by I. Linssen

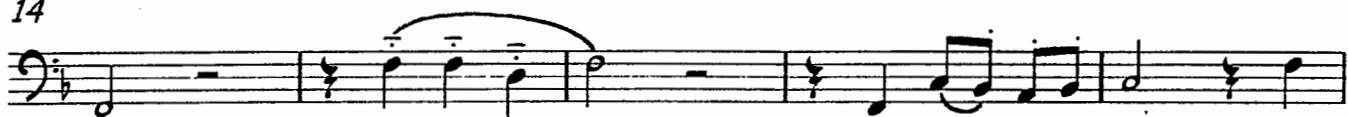
$\text{♩} = 100$



8



14



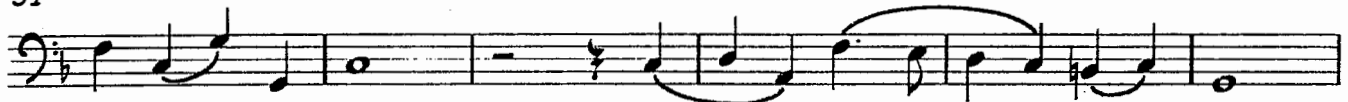
19



25



31



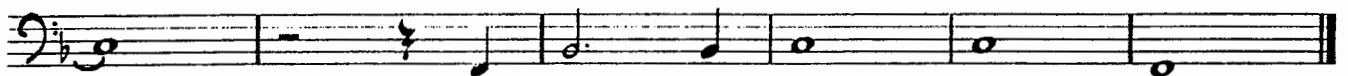
37



43



47



Thomas Bateson (1604)

transcription for
trombone quartet
by I. Linssen

Trombone 1
 Trombone 2
 Trombone 3
 Trombone 4

10
 19

Musical score for Trombone 1, 2, 3, and 4, measures 1-19. The score is in bass clef with a tempo of 100. It features various musical notations including notes, rests, dynamics (mf, f), and articulation marks.

transcription intellectual property of the 'Limburgs Trombone Ensemble'
If Love Be Blind © Anne Christopherson GRSM ARCM

28

Four staves of music. The first staff has a treble clef and a key signature of one sharp (F#). The other three staves have bass clefs. The music consists of eighth and sixteenth notes, often beamed together, with various rests and ties. There are some accidentals, including flats and naturals.

37

Four staves of music. The first staff has a treble clef and a key signature of one sharp (F#). The other three staves have bass clefs. The music continues with eighth and sixteenth notes, beamed notes, and rests. There are some accidentals, including flats and naturals.

45

Four staves of music. The first staff has a treble clef and a key signature of one sharp (F#). The other three staves have bass clefs. The music continues with eighth and sixteenth notes, beamed notes, and rests. There are some accidentals, including flats and naturals.