

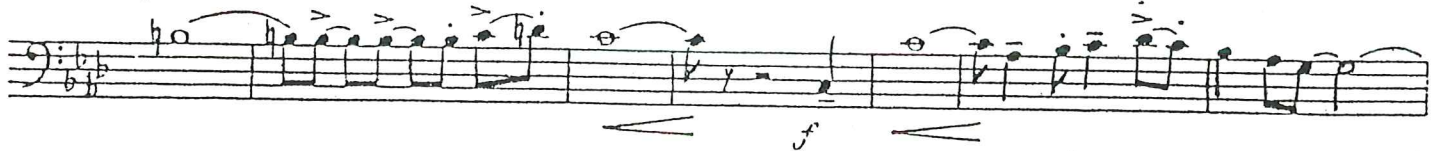
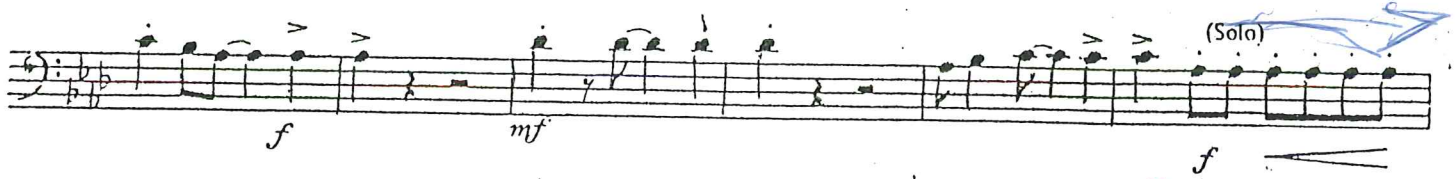
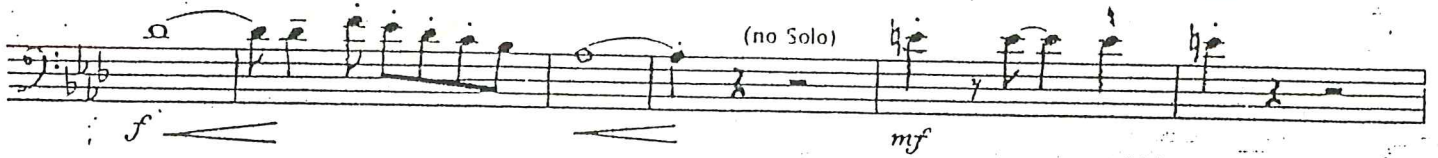
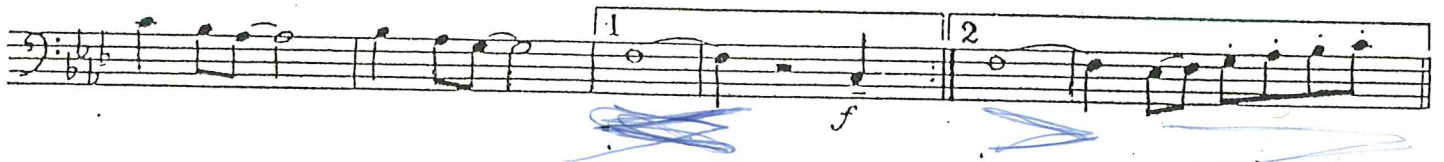
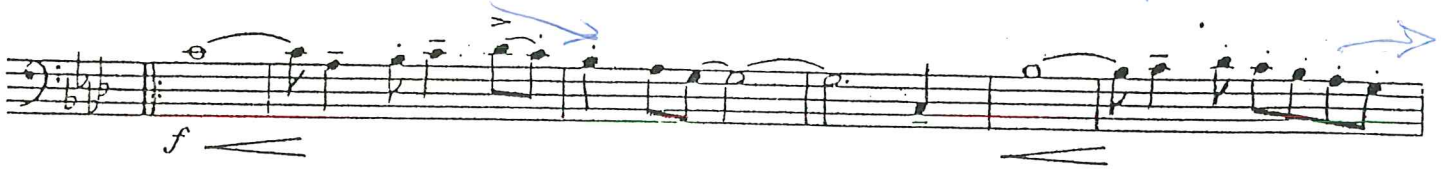
Klaus Thyne

1st Trombone

To L. C. Bradford
Trombumba
(Trombone Quartet)

G. W. LOTZENHISER
ASCAP

Moderato ala rumba



Heinz Meynen

2nd Trombone

To L. C. Bradford
Trombumba
(Trombone Quartet)

G. W. LOTZENHISER
ASCAP

Moderato ala rumbe

The musical score for the 2nd Trombone part of "Trombumba" consists of ten staves of music. The key signature is B-flat major (two flats) and the time signature is 4/4. The tempo is "Moderato ala rumbe". The score includes various musical notations such as eighth and sixteenth notes, rests, and dynamic markings. Handwritten annotations include "ff" (fortissimo) above the first staff, "mf" (mezzo-forte) below the second staff, and "ff" above the third staff. A "Solo" section is marked on the fifth staff, with a "no Solo" instruction on the sixth staff. The score concludes with a double bar line and a final "ff" marking.

3rd Trombone

To L. C. Bradford
Trombuna
(Trombone Quartet)

Hans Thijssen

Moderato ala rumba

G. W. LOTZENHISER
ASCAP

Handwritten *ff* and a slash.

mf

ff

mf

mf (Solo) *f* *ff*

(no Solo) *mf*

mf

mf

ff

Copyright © 1974 by Belwin-Mills Publishing Corp., Melville, N.Y.
International Copyright Secured Made in U.S.A. All Rights Reserved

4th Trombone

10 E. C. Blodgett
Trombumba
(Trombone Quartet)

Hans Huyssen

Moderato ala rumba

G. W. LOTZENHISER
ASCAP

Handwritten musical score for the 4th Trombone part of the piece "Trombumba" by G. W. Lotzenhiser. The score is written on ten staves in bass clef with a key signature of two flats (Bb, Eb) and a 4/4 time signature. The tempo is marked "Moderato ala rumba". The score includes various musical notations such as eighth notes, quarter notes, and rests. Handwritten annotations include "ff p", "mp", "mf", "ff", and "Solo". There are also handwritten notes like "Kp. desentbolisimo" and "ff". The score is divided into sections, with some parts marked with repeat signs and first/second endings. The piece concludes with a final cadence marked with a double bar line and a repeat sign.

mod. ala Rumba Trombumba

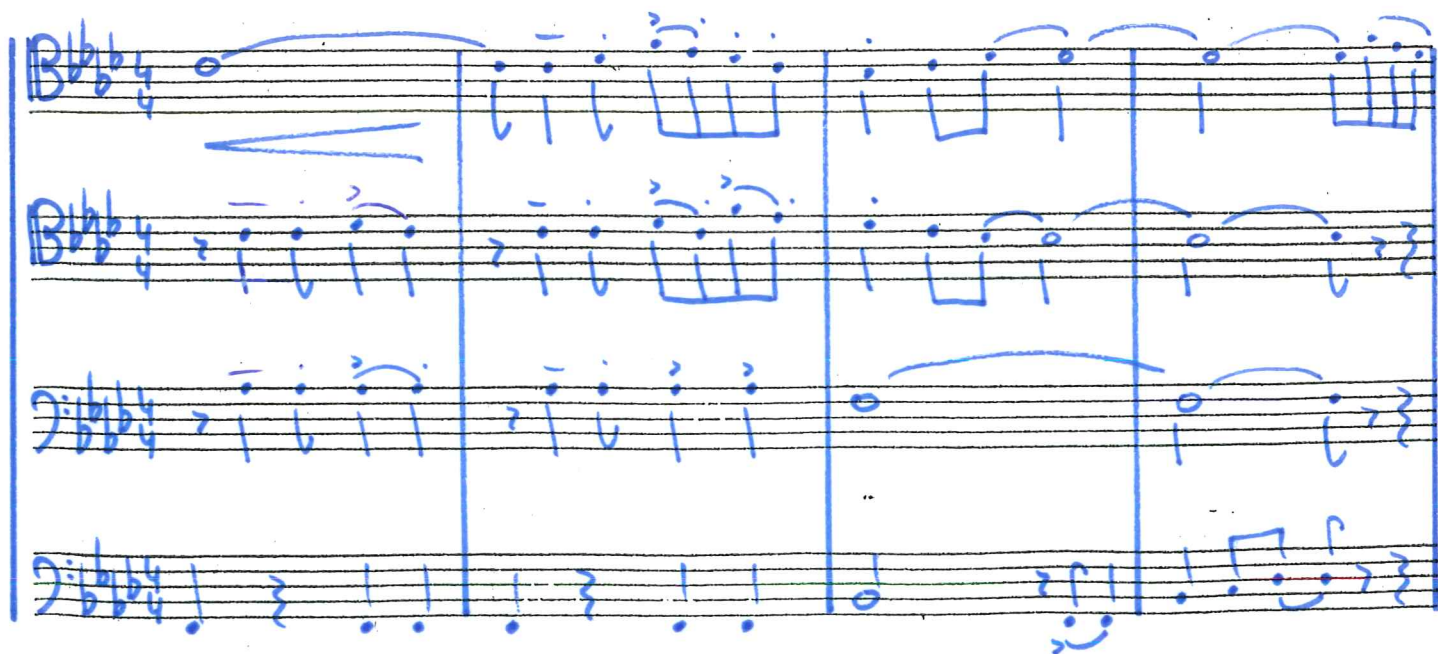
G.W. LotzenHiser

Handwritten musical score for Trombumba, measures 1-4. The score is written on four staves in B-flat major (two flats) and 4/4 time. The first three staves (treble and bass clefs) feature a rhythmic pattern of eighth and sixteenth notes, often beamed together. The fourth staff (bass clef) contains a series of exclamation marks, indicating a specific rhythmic or melodic pattern. Dynamic markings include *ff* (fortissimo) and *f* (forte).

Handwritten musical score for Trombumba, measures 5-8. The score continues on four staves. A circled 'A' marks the beginning of a new section. The notation includes various note values, rests, and dynamic markings such as *f* (forte) and *mf* (mezzo-forte). The fourth staff again features exclamation marks.

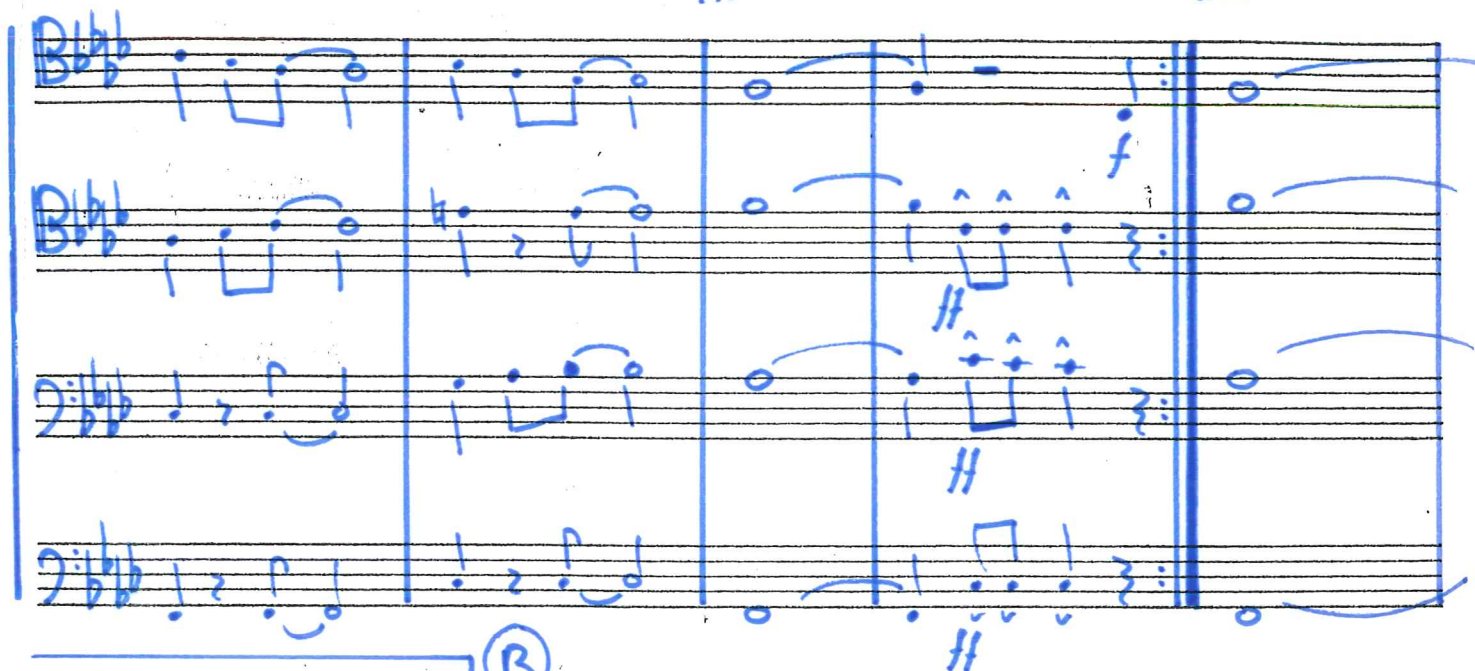
Handwritten musical score for Trombumba, measures 9-12. The score continues on four staves. The notation includes various note values, rests, and dynamic markings. The fourth staff features exclamation marks. The bottom of the page shows some yellowed tape and faint, illegible text.

Handwritten musical score for four staves, all in B-flat major (three flats) and 4/4 time. The notation includes various note values, rests, and dynamic markings.



1. 2.

Handwritten musical score for four staves, continuing the piece. It includes a first ending bracket labeled '1.' and a second ending bracket labeled '2.'. The notation includes various note values, rests, and dynamic markings.



Handwritten musical score for four staves, continuing the piece. It includes a section marked with a circled 'B' and a first ending bracket labeled '1.'. The notation includes various note values, rests, and dynamic markings.



Handwritten musical score for a four-part setting in B-flat major, 4/4 time. The score is written on ten staves, grouped into three systems of four staves each. The notation includes various musical symbols such as notes, rests, beams, slurs, and dynamic markings. The key signature has two flats (B-flat and E-flat), and the time signature is 4/4. The score is written in blue ink on white paper.

Key features of the notation:

- Staff 1 (Soprano):** Starts with a whole rest, followed by a half note G4, a half note A4, and a half note B4. A dynamic marking of *f* is present.
- Staff 2 (Alto):** Starts with a half note G4, a half note A4, and a half note B4. A dynamic marking of *mf* is present.
- Staff 3 (Tenor):** Starts with a half note G4, a half note A4, and a half note B4. A dynamic marking of *mf* is present.
- Staff 4 (Bass):** Starts with a half note G4, a half note A4, and a half note B4. A dynamic marking of *mf* is present.
- Staff 5 (Soprano):** Starts with a half note G4, a half note A4, and a half note B4. A dynamic marking of *mf* is present.
- Staff 6 (Alto):** Starts with a half note G4, a half note A4, and a half note B4. A dynamic marking of *mf* is present.
- Staff 7 (Tenor):** Starts with a half note G4, a half note A4, and a half note B4. A dynamic marking of *mf* is present.
- Staff 8 (Bass):** Starts with a half note G4, a half note A4, and a half note B4. A dynamic marking of *mf* is present.
- Staff 9 (Soprano):** Starts with a half note G4, a half note A4, and a half note B4. A dynamic marking of *mf* is present.
- Staff 10 (Alto):** Starts with a half note G4, a half note A4, and a half note B4. A dynamic marking of *mf* is present.

Handwritten musical score in blue ink on a five-line staff. The score is written in B-flat major (two flats) and 4/4 time. It consists of two systems. The first system has four staves. The top two staves are for a piano (P) and the bottom two for a cello/contrabass (C). The notation includes various note values, rests, and dynamic markings like 'f' (forte) and 'H' (harmonic). The second system has four staves, with the top two starting with a double bar line, indicating a new section or measure. The handwriting is fluid and appears to be a student's work.